

INSTRUCTION MANUAL

Mk 2 Fold Down Clotheslines



IMPORTANT - READ THESE INSTRUCTIONS
BEFORE USING YOUR CLOTHESLINE

Suitable for models

MINI / SLIM / SINGLE / TWIN

Product Code	
Date of purchase	
Name & location of supplier	

FD1221-V4

BEFORE YOU BEGIN

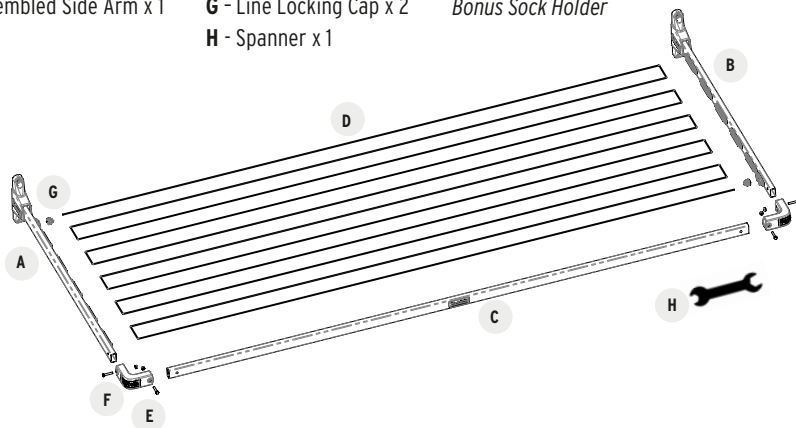
Please check that the carton contains all the required parts before assembly.

Your **MINI/SLIM/SINGLE** Fold Down carton should contain the following:

- A** - Right hand Pre-assembled Side Arm x 1
- B** - Left Hand Pre-assembled Side Arm x 1
- C** - Front Bar x 1
- D** - Clothesline Cord
- E** - Nuts & Bolts x 4

- F** - Corner Brackets x 2
- G** - Line Locking Cap x 2
- H** - Spanner x 1

Bonus Pegs with Peg Bag (12 pcs)
Bonus Sock Holder

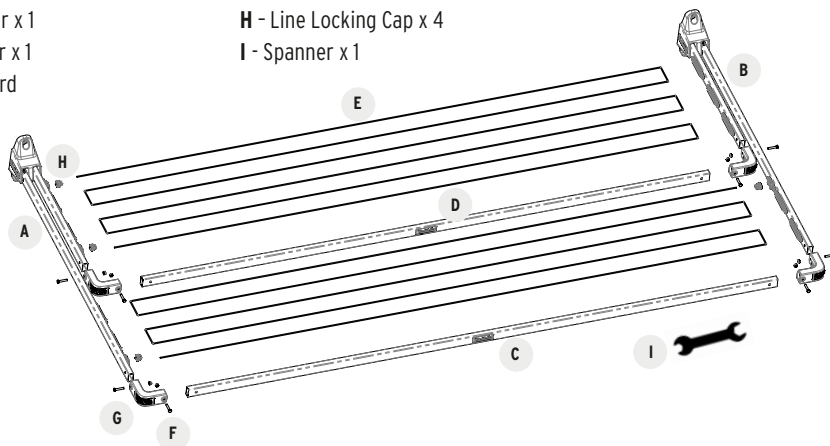


Your **TWIN** Fold Down carton should contain the following:

- A** - Right hand Pre-assembled Side Arm x 1
- B** - Left Hand Pre-assembled Side Arm x 1
- C** - Outer Front Bar x 1
- D** - Inner Front Bar x 1
- E** - Clothesline Cord

- F** - Nuts & Bolts x 4
- G** - Corner Brackets x 4
- H** - Line Locking Cap x 4
- I** - Spanner x 1

Bonus Pegs with Peg Bag (12 pcs)
Bonus Sock Holder



Identify the type of installation required.

1. **Wall mounting installation** - follow Wall mounting installation below.

2. **Free standing** - use Daytek Ground Mount Kit
 *Sold separately (available in standard in ground installation or with base).

WALL MOUNTING INSTALLATION

Tools required for installation:

- Measuring tape and pencil
- Hammer Drill
- Socket set and adjustable wrench
- Hammer
- Scissors
- Hammer drill
- Spirit level

Important:

Mounting hardware required will vary depending on the surface of the wall the Clothesline will be mounted to.

When mounting to concrete, brick or masonry walls we recommend **Daytek 8mm Marine Grade Anchor Bolts** (Sold separately). For wood or other specialised materials please consult your local hardware store or professional for advice.

Never attach clothesline to mortar between brickwork. Ensure fixing surface is structurally sound. Install away from Heating or Cooling Units.

MOUNTING LOCATION

For best drying results, select a location that receives maximum sunlight and airflow. Ensure that the area has sufficient clearance around the clothesline. We recommend 100mm clearance each side and 500mm in front of clothesline frame when open.

Mounting Width – Centre to centre fixing points

MINI Fold Down 1.52m

SLIM, SINGLE & TWIN Fold Down 2.22m

CUSTOM MADE - refer to custom size wall bracket centres position

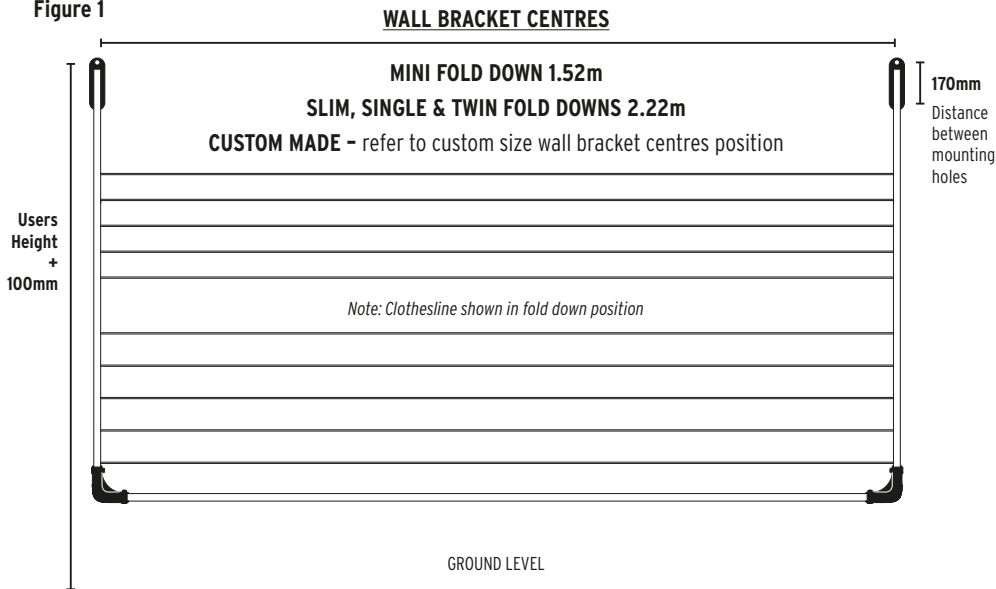
Mounting Height - The recommended mounting height for the top hole in the wall bracket is:

User height +100mm

Minimum mounting height is 1.5m

Note: always consider the main users height and the length of the items you plan on drying.

Figure 1

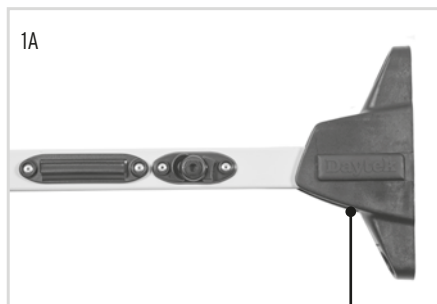


INSTALLATION PROCEDURE

1. MOUNT SIDE ARMS TO WALL

Note: For ground mount kits installation skip to step 1.4

- 1.1 **Mark wall bracket positions and centres.** Refer to Figure 1 for fixing centres measurements for the model you are installing. The vertical distance between wall bracket mounting holes is 170mm. Take note of the recommended installation height.
- 1.2 **Use 8mm x 50mm masonry anchors or suitable wood screws to fasten to your selected surface.** Consult a hardware store or builder if unsure.
- 1.3 **Drill holes suitable to your chosen fixings squarely into your wall at the marked location.**
- 1.4 **Fix the pre-assembled Side Arms to the wall.**
Note the Left and Right hand assemblies (Daytek logo should always be upright - refer to Fig. 1A)



TO DETERMINE LEFT AND RIGHT PRE-ASSEMBLED SIDE ARMS ALWAYS ENSURE DAYTEK LOGO ON BRACKET IS UPRIGHT AND LINE BRACKETS ARE FACING INWARDS

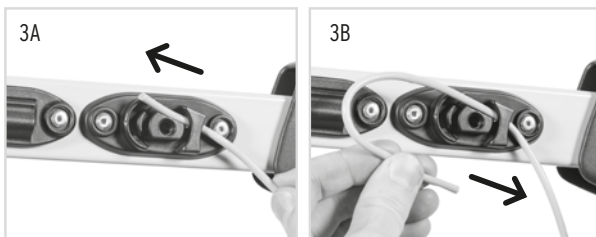
2. CONNECT CORNER BRACKETS AND FRONT BAR

- 2.1 **Attach a Corner Bracket over each end of the Front Bar and secure with the supplied nuts & bolts** (See Fig. 2A - 2C). For Twin model, assemble and attach the Inner Front Bar first (shorter one).
- 2.2 **Lock each side arm into the upright position.** To do this lift each side arm upwards to the maximum point of travel and push inwards until it hits a hard stop, then release (refer to operating diagrams on page 7).
- 2.3 **Install Front Bar to the Side Arms and secure with supplied nuts & bolts** (See Fig. 2D - 2F).

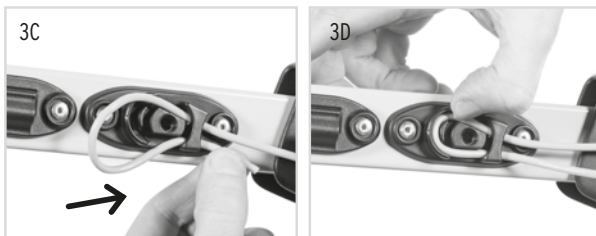


3. STRINGING YOUR CLOTHESLINE

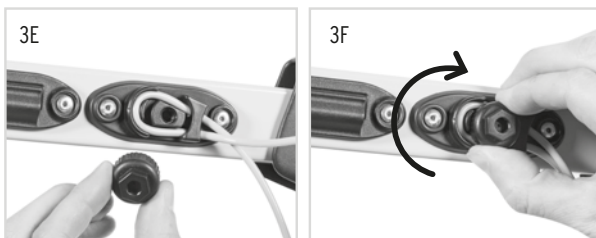
3.1 **Begin threading (stringing) the clothesline with the cord, beginning at the inner line tensioner.** To do this insert the line through the tensioner and press into the outer groove as shown. (See Fig. 3A - 3D)



3.2 **Attach Line Locking Cap and tighten to secure the line end.** Use provided spanner if necessary. Do not over tighten! (See Fig. 3E - 3F)



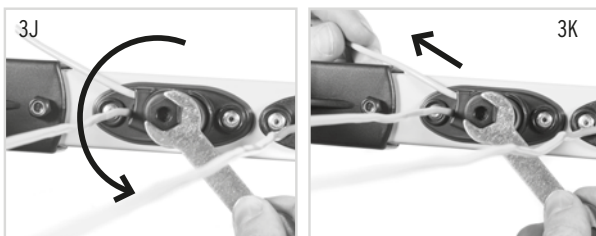
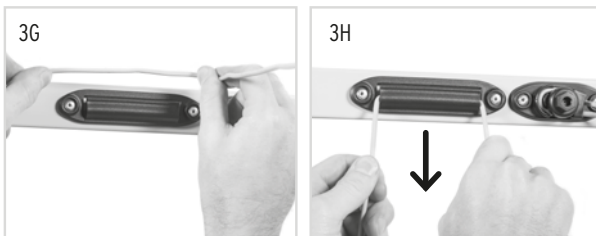
3.3 **Proceed to string the clothesline by locking the cord behind the line brackets at either side of the clothesline.** Use the diagrams on next page as a guide. (See Fig. 3G & 3H)



3.4 **Finish by inserting the line through the outer line clamp, pulling tight (hand tension only) and secure with the Line locking Cap.** Be sure to work all of the slack line towards the end.

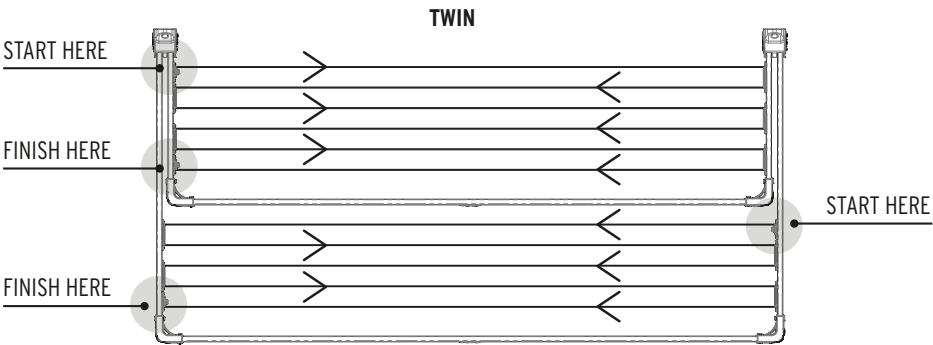
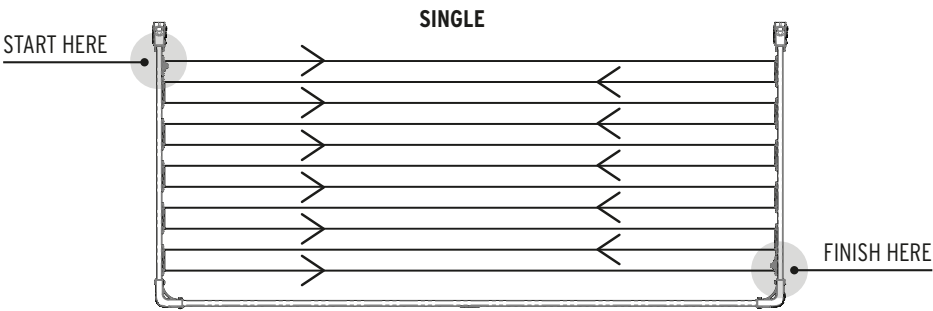
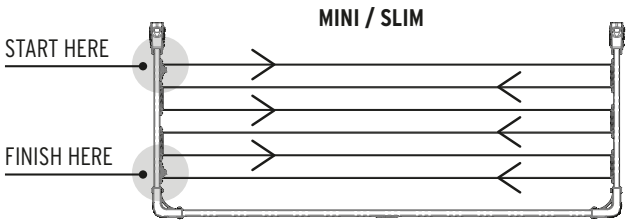
3.5 **Trim end of cord leaving approx 100mm excess.**

3.6 **The Line Locking Cap can be loosened to re-tension the line as necessary.** (See Fig. 3J - 3K)



INSTALLATION PROCEDURE (CONTINUED)

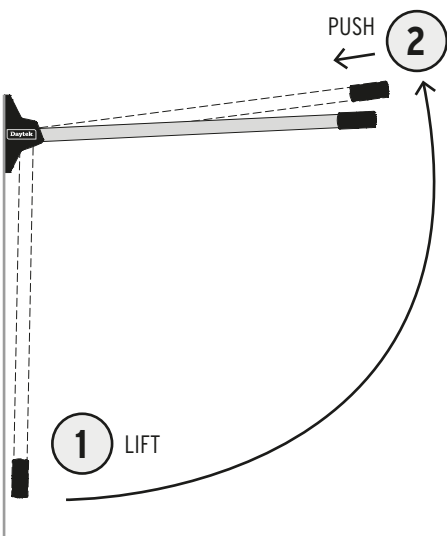
3. STRINGING YOUR CLOTHESLINE (CONTINUED)



OPERATING YOUR FOLD DOWN CLOTHESLINE

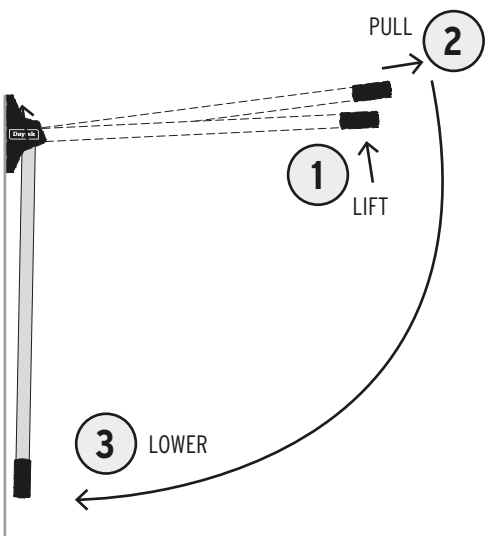
TO RAISE

Grip the center of the Front Bar with one or two hands as shown below. Gently raise the bar to the maximum point of travel, push inwards with even force until it hits a hard stop and then release. The clothesline will be locked into the upright position.



TO LOWER

Grip the centre of the Front Bar and gently lift the clothesline upwards to the maximum point of travel. Pull outwards to unlock the bracket and lower.



Note: Raising the frame without gripping the center may result in only one arm locking correctly. If this occurs, raise the affected arm to max height and press inwards until it hits a hard stop and release.

IMPORTANT! Maximum recommended loading of this clothesline is 1kg per meter of line. Refer to your individual clothesline for specified line space.

CORD TENSIONING

Over time the cord may stretch causing the lines to sag. To remove excessive slack from the line, start at the rear line and work your way to the front line to remove all the slack. Whilst holding the excess line, release the cord from the tensioner and pull the slack through before locking back into place.

Note: Do not over tension the line as this may bow the side arms and affect the clotheslines operation.

Having some slack in your cord is not a bad thing provided your items of washing are clear from touching the ground.

CARE AND MAINTENANCE

If you are living within close proximity to a seaside location, salt in the air will build up a thin layer on your clothesline over time. To ensure longevity it is important to regularly wipe down the surface of your clothesline with a damp cloth.

Wipe away dust and dirt regularly to prevent build up and ensure smooth operation.

Regularly check your clothesline for damage or wear and tear. Any damaged part should be replaced or repaired before using again. A full range of spares are available through Daytek.

25 YEAR PRODUCT WARRANTY

Our goods come with guarantees that cannot be excluded under the Australian Consumer Law. You are entitled to a replacement or refund for a major failure and for compensation for any loss or damage. You are also entitled to have the goods repaired or replaced if the goods fail to be acceptable quality and the failure does not amount to a major failure.

If any part of this clothesline fails to operate correctly due to faulty workmanship or defective material Daytek Australia will repair or replace free of cost within 25 years from the original date of purchase (receipt of purchase required). The PVC line cord is covered by a 2 year warranty from the date of purchase. Any evidence of misuse or incorrect adjustment will void the warranty. To claim a product warranty, please contact Daytek Australia

directly. You must bear the cost of claiming the warranty. This warranty is in addition to other rights and remedies of the customer under law. Where it is deemed necessary, Daytek Australia will arrange for the inspection of your product.

Warranty exclusions

Defects caused by incorrect installation, adjustment, modification, overloading or misuse. Paint deterioration caused by exposure to sea air where the product is installed in coastal areas. Product damage or deterioration due to abnormal environmental conditions including storm damage, fire, wind, humidity and similar. Damage to frame or line through accident or negligence. Warranty does not cover bonus items.

The warranty covers domestic use only and does not apply to commercial applications.

CONTACT DAYTEK



enquiry@daytek.com.au



daytek.com.au



facebook.com/daytekAU



www.productreview.com.au/listings/daytek

Manufactured/Supplied by Daytek Australia Pty. Ltd.

77-81 Gower Street, Preston

Victoria 3072 Australia

T +61 3 9470 1755

F +61 3 9470 5381

E enquiry@daytek.com.au

daytek.com.au



Daytek[®]
Design for Today